



broadloom



tile



Lush Life
design is thriving

shaw contract group



affluence tile



decor tile



riche tile



affluence + riche tile.



vitae



verve



joie

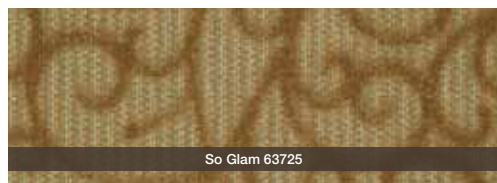


wisdom

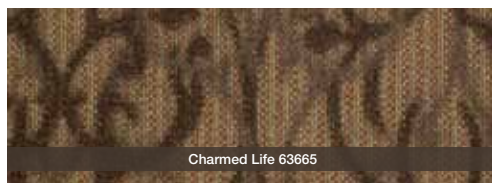
Elegant, timeless, iconic designs inspired by opulent pattern and form. Vintage chic meets clean modernism. Whimsical plays of silhouette and sculpture. The texture and hand of a treasured heirloom. It's a celebration of the things in life that ground us as they uplift us.

design is *thriving*

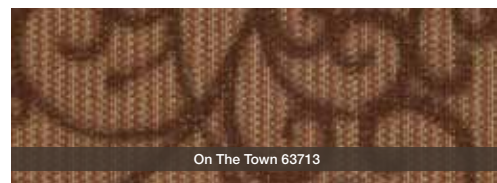
shown in verve



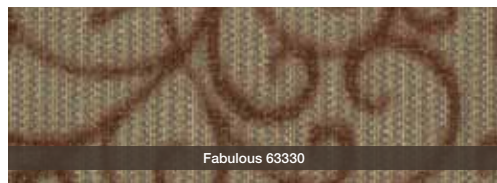
So Glam 63725



Charmed Life 63665



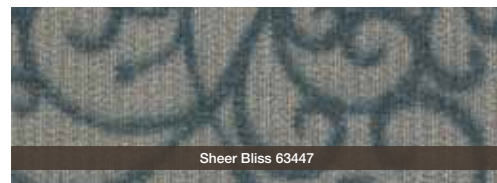
On The Town 63713



Fabulous 63330



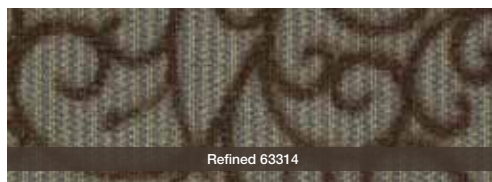
Ooh La La 63335



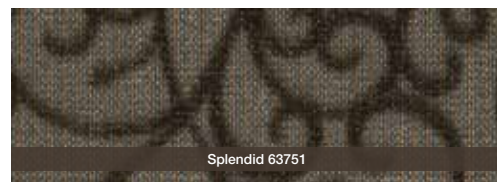
Sheer Bliss 63447



Panache 63761



Refined 63314



Splendid 63751

product specifications

	Broadloom	Tile
Face weight:	verve: 28 oz vitae: 28 oz wisdom: 26 oz joie: 26 oz	affluence: 28 oz decor: 28 oz riche: 28 oz
Fiber:	Eco Solution Q®	Eco Solution Q®
Backing:	EcoWorx® Performance Broadloom	EcoWorx®



For more information on **Lush Life** contact your local Shaw Contract Group representative, visit us at www.shawcontractgroup.com or call 877-502-SHAW.

shaw contract group®

© 2011 Shaw, a Berkshire Hathaway Company 



print
broadloom

LushLife
design is thriving

shaw contract group®



moritz



kennebunk



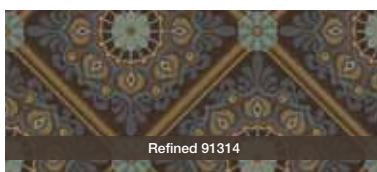
bellcourt



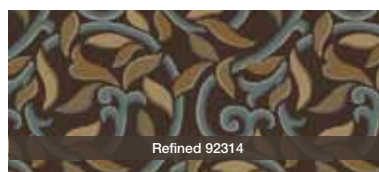
cranford

Elegant, timeless, iconic designs inspired by opulent pattern and form. Vintage chic meets clean modernism. Whimsical plays of silhouette and sculpture. The texture and hand of a treasured heirloom. It's a celebration of the things in life that ground us as they uplift us.

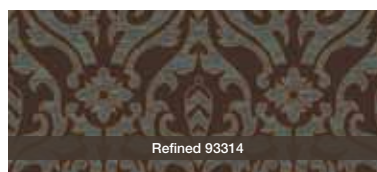
design is *thriving*



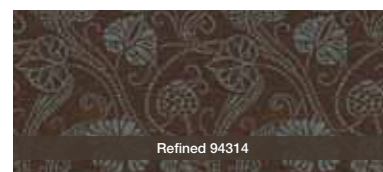
Refined 91314



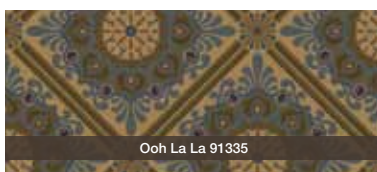
Refined 92314



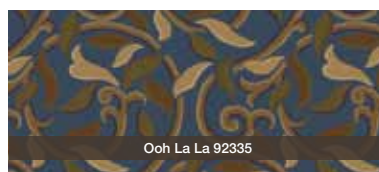
Refined 93314



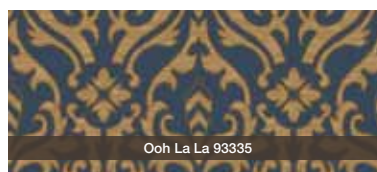
Refined 94314



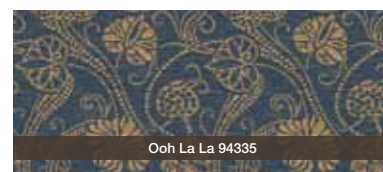
Ooh La La 91335



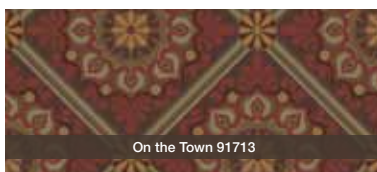
Ooh La La 92335



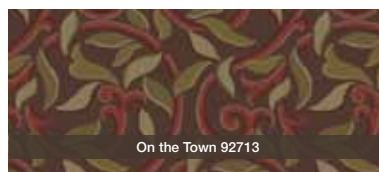
Ooh La La 93335



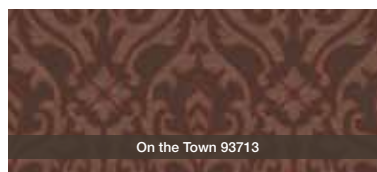
Ooh La La 94335



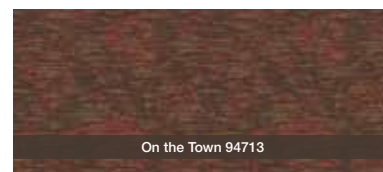
On the Town 91713



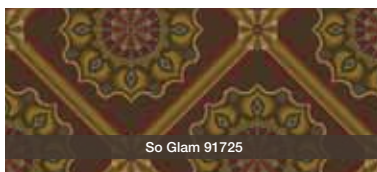
On the Town 92713



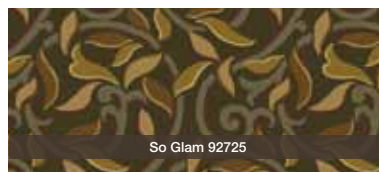
On the Town 93713



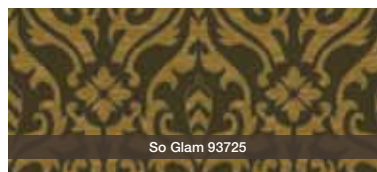
On the Town 94713



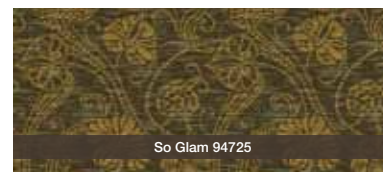
So Glam 91725



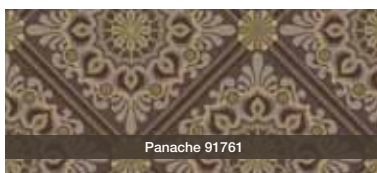
So Glam 92725



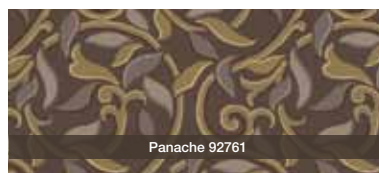
So Glam 93725



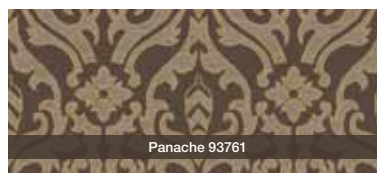
So Glam 94725



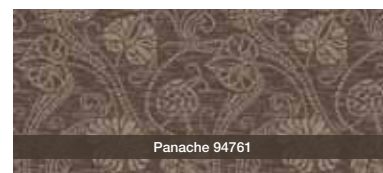
Panache 91761



Panache 92761



Panache 93761



Panache 94761

product specifications	
Face weight:	Print Broadloom
Fiber:	36 oz
Backing:	Eco Solution Q®
	Classicbac



For more information on **Lush Life** contact your local Shaw Contract Group representative, visit us at www.shawcontractgroup.com or call 877-502-SHAW.

shaw contract group

tile specifications

style name	riche tile
style number	59363
construction	multi-level pattern loop
fiber	eco solution q® nylon
dye method	100% solution dyed

	english	metric

pattern repeat	none	
tufted weight	28.0	949.36 g/m ²
gauge	1/10	39.37 per 10 cm
stitches per inch	13.0	51.18 per 10 cm
finished pile thickness	0.136	3.45 mm
total thickness	0.294	7.47 mm
average density	7412	13.80 kilotex
product size	24" x 24"	60.96 cm x 60.96 cm
primary backing	synthetic	
secondary backing	ecoworx® tile	
protective treatments	ssp® shaw soil protection	
gsa approved product	yes	



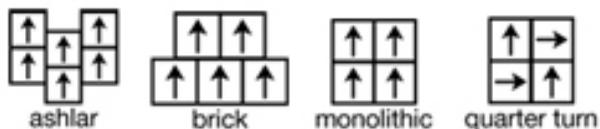
testing

radiant panel	Class I
nbs smoke	less than 450
electrostatic propensity	less than 3.5 kv

warranties

lifetime commercial limited

installation method



coordinating products

affluence tile, decor tile, wisdom, joie, verve, vitae

environmental certification

green label plus certification number	glp9968
nsf140 platinum	
cradle to cradle silver certified	



eco impacts

end of life

recyclability

100% recyclable

shaw closed looped recycling

100.0%

environmental guarantee

free pick up & recycling

To recycle call 800.509.SHAW

materials

ingredients

face fiber

nylon 6

dye method

100% solution dyed

backing

polyolefin composite

surface treatments

non c8 fluorocarbon chemistry

does not contain PVC, phthalates, or PBD/PBDE

recycled content

total recycled content (by weight)

44.4 %

pre-consumer

31.7 %

post-consumer

12.7 %

bio-based/rapidly renewable content (by weight)

0.0 %

packaging

100% recyclable

country of origin (manufacturer)

USA

Meets or exceeds all local and national regulations in country of manufacture.

Manufactured in an ISO9001 & ISO14001 certified facility or equivalent.

Recycled content is calculated using system allocation, mass balance, and direct insertion.

The actual recycled content in this product will likely vary. For more information email

info@shawgreenedge.com.

third party certifications

MBDC cradle to cradle

silver certified

NSF 140

platinum certified

CRI green label plus

certified glp9968

USGBC LEED

contributes

Building Research Establishment

certified

Good Environmental Choice Australia

certified

Good Environmental Choice New Zealand

certified

Singapore green label

certified 039-003

social responsibility

Shaw and our people provide financial support, volunteer service and leadership for charitable and civic organizations in the communities where we work and live. Additionally, we strive to adhere to all applicable laws regarding labor, discrimination and harassment, wages and benefits, health and safety, diversity and equal opportunity.